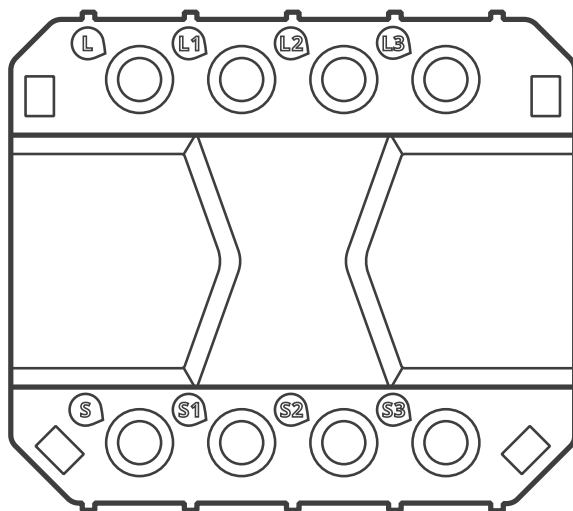




Works with
everything

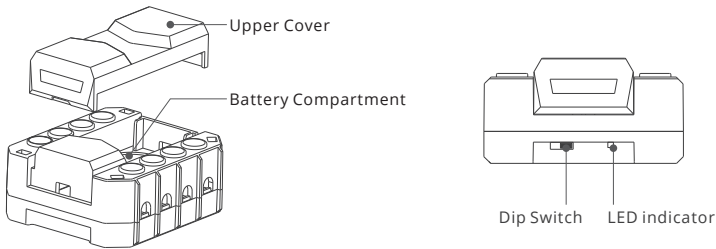
S-MATE

User manual V1.2



Switch Mate

Product Introduction



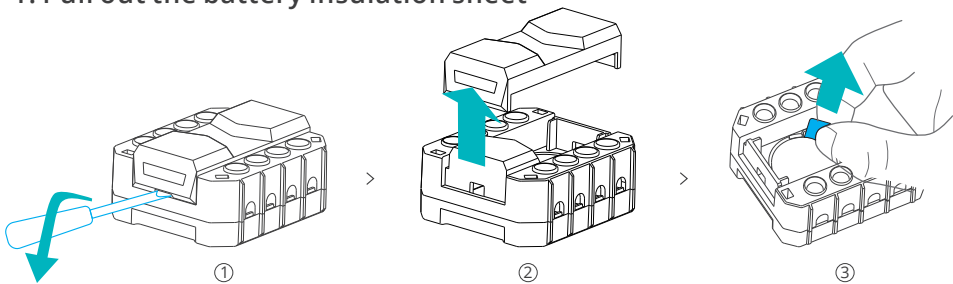
⚠ The device weight is less than 1 kg. The installation height of less than 2 m is recommended.

Features

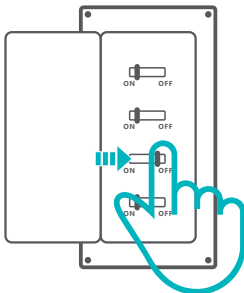
S-MATE is an eWeLink-Remote sub-device, used to connect with an ordinary rocker or pulse switch. The on/off of the gateway can be controlled at close range by sub-device locally after it is added to the gateway, and the sub-device can also trigger other smart devices in the smart scene through the cloud.

Operating Instruction

1. Pull out the battery insulation sheet



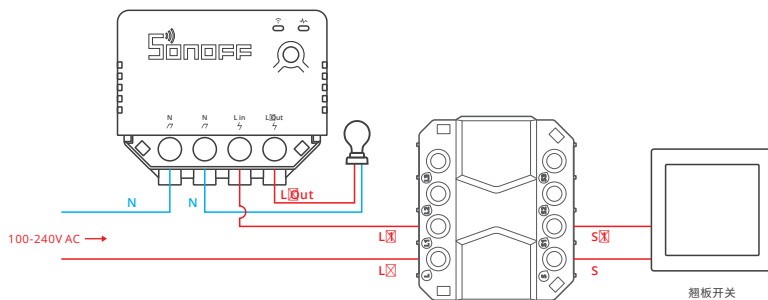
2. Power off



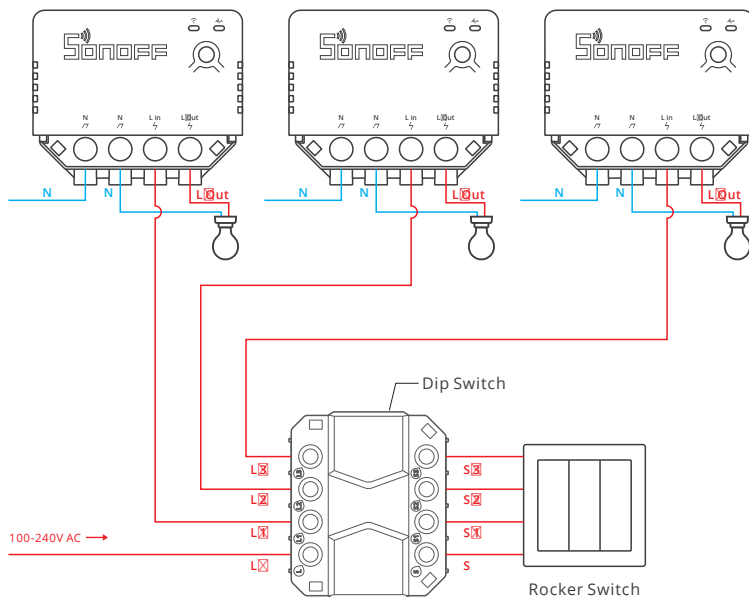
⚠ Please install and maintain the device by a professional electrician. To avoid electric shock hazard, do not operate any connection or contact the terminal connector while the device is powered on !

3. Wiring instruction

The wiring instruction of connecting the S-MATE with one MINIR3:

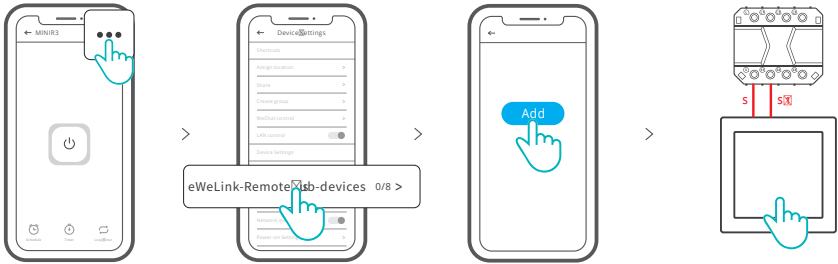


The wiring instruction of connecting the S-MATE with three MINIR3:



- ❗ The dip switch is factory set to the right. Please toggle the dip switch to the left if connection a pulse switch to the device.
- ❗ There are L/L1/L2/L3 on the S-MATE which can be used as terminal connectors, but you have options to directly connect the L wire of MINIR3 to the L wire in the switching box without going through the S-MATE.
- ❗ Make sure the neutral wire and live wire connection is correct.

4. Add to eWeLink-Remote gateway

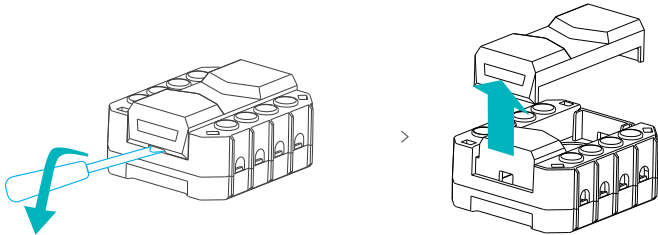


- ① You are allowed to add S-MATE to the devices that have eWeLink-Remote gateway such as MINIR3 and etc. on their setting page.
- ② Add S-MATE on Smart Scene to trigger other devices.

Specifications

| | |
|--|----------------------------|
| Model | S-MATE |
| Input | 100-240V ~ 50/60Hz 16A Max |
| Output | 100-240V ~ 50/60Hz 16A Max |
| Power supply | 3V button cell1 |
| Battery model | CR2032 |
| “eWeLink remote” Transmission Distance | Up to 50M |
| Working temperature | -10°C~40°C |
| Shell material | PC |
| Dimension | 51x44.5x24mm |

Replace batteries



⚠ Please turn off the electricity before replacing the battery of device.

FCC Warning

Changes or modifications not expressly approved by the party responsible for compliance could avoid the user's authority to operate the equipment.

This device complies with part 15 of the FCC Rules. Operation is subject to the following two conditions: (1) This device may not cause harmful interference, and (2) this device must accept any interference received, including interference that may cause undesired operation.

FCC Radiation Exposure Statement:

This equipment complies with FCC radiation exposure limits set forth for an uncontrolled environment. This transmitter must not be co-located or operating in conjunction with any other antenna or transmitter.

Note:

This equipment has been tested and found to comply with the limits for a Class B digital device, pursuant to part 15 of the FCC Rules. These limits are designed to provide reasonable protection against harmful interference in a residential installation. This equipment generates, uses and can radiate radio frequency energy and, if not installed and used in accordance with the instructions, may cause harmful interference to radio communications. However, there is no guarantee that interference will not occur in a particular installation. If this equipment does cause harmful interference to radio or television reception, which can be determined by turning the equipment off and on, the user is encouraged to try to correct the interference by one or more of the following measures:

- Reorient or relocate the receiving antenna.
- Increase the separation between the equipment and receiver.
- Connect the equipment into an outlet on a circuit different from that to which the receiver is connected.
- Consult the dealer or an experienced radio/TV technician for help.

Hereby, Shenzhen Sonoff Technologies Co., Ltd. declares that the radio equipment type S-MATE is in compliance with Directive 2014/53/EU. The full text of the EU declaration of conformity is available at the following internet address:

<https://sonoff.tech/usermanuals>



Shenzhen Sonoff Technologies Co., Ltd.

1001, BLDG8, Lianhua Industrial Park, shenzhen, GD, China
ZIP code: 518000 Website: sonoff.tech

